



# Certificate of Analysis

Feb 16, 2021 | Royal Remedies

1830 N University Dr  
Plantation, FL, 33322, US



Sample:KN10211005-001

Harvest/Lot ID: 1001

Seed to Sale #N/A

Batch Date :02/09/21

Batch#: 1001

Sample Size Received: 4 gram

Retail Product Size: 1

Ordered : 02/09/21

sampled : 02/09/21

Completed: 02/16/21 Expires: 02/16/22

Sampling Method: SOP Client Method

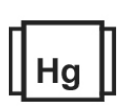
**PASSED**

Page 1 of 1

## PRODUCT IMAGE SAFETY RESULTS



Pesticides  
NOT TESTED



Heavy Metals  
NOT TESTED



Microbials  
NOT TESTED



Mycotoxins  
NOT TESTED



Residuals  
Solvents  
NOT TESTED



Filtration  
NOT TESTED



Water Activity  
NOT TESTED



Moisture  
NOT TESTED



Terpenes  
NOT TESTED

## CANNABINOID RESULTS



Total THC  
**0.285%**



Total CBD  
**0.358%**



Total Cannabinoids  
**84.133%**

CBDV	CBDA	CBGA	CBG	CBD	THCV	CBN	D9-THC	D8-THC	CBC	THCA
ND	ND	ND	ND	0.358%	ND	ND	0.285%	83.489%	ND	ND
ND	ND	ND	ND	3.580 mg/g	ND	ND	2.850 mg/g	834.890 mg/g	ND	ND
LOD 0.01%	0.01%	0.01%	0.01%	0.01%	0.01%	0.01%	0.01%	0.01%	0.01%	0.01%

## Cannabinoid Profile Test

Analyzed by 113	Weight 0.2118g	Extraction date : NA	Extracted By : NA
Analysis Method -Expanded Measurement of Uncertainty: Flower Matrix d9-THC:12.7%, THCa: 9.5%, TOTAL THC 11. 1%. These uncertainties represent an expanded uncertainty expressed at approximately the 95% 02/16/21 confidence level using a coverage factor k=2 for a normal distribution. 13:23:36			
Analytical Batch -KN000420POT		Instrument Used : HPLC E-SHI-008	

Reagent	Dilution	Consums. ID
120320.R02	40	00298878
021521.R02		190909059
021521.R03		947.217

Full spectrum cannabinoid analysis utilizing High Performance Liquid Chromatography with UV detection (HPLC-UV). (Method: SOP.T.30.050 for sample prep and Shimadzu High Sensitivity Method SOP.T.40.020 for analysis.). \*Based on FL action limits.

This report shall not be reproduced, unless in its entirety, without written approval from Kaycha Labs. This report is an Kaycha Labs certification. The results relate only to the material or product analyzed. Test results are confidential unless explicitly waived otherwise. Void after 1 year from test end date. Cannabinoid content of batch material may vary depending on sampling error. IC=In-control QC parameter, NC=Non-controlled QC parameter, ND=Not Detected, NA=Not Analyzed, ppm=Parts Per Million, ppb=Parts Per Billion. Limit of Detection (LoD) and Limit Of Quantitation (LoQ) are terms used to describe the smallest concentration that can be reliably measured by an analytical procedure. RPD=Reproducibility of two measurements. Action Levels are State determined thresholds for human safety for consumption and/or inhalation. The result >99% are variable based on uncertainty of measurement (UM) for the analyte. The UM error is available from the lab upon request. The "Decision Rule" for the pass/fail does not include the UM. The limits are based on F.S. Rule 64-4.310.

Sue Ferguson

Lab Director

State License # n/a  
ISO Accreditation #  
17025:2017



Signature

02/16/2021

Signed On



# Certificate of Analysis

Powered by Confident Cannabis

Sample: 2009DBL0181.8787

METRC Sample:

Strain: D8 THC

Ordered: 09/14/2020; Sampled: 09/14/2020; Completed: 09/18/2020

813-134-1

Concentrates & Extracts, Other



Pesticides



Microbials



Mycotoxins



Heavy Metals



Foreign Matter



Solvents

## Terpenes

Analyzed by 300.13 GC/FID and GC/MS



0.108%  
Total Terpenes



Herbal

Compound	LOQ	Mass	Mass	Relative Concentration
	%	%	mg/g	
p-Cymene	0.010	0.108	1.08	
α-Bisabolol	0.010	<LOQ	<LOQ	
α-Humulene	0.010	<LOQ	<LOQ	
α-Pinene	0.010	<LOQ	<LOQ	
α-Terpinene	0.010	<LOQ	<LOQ	
β-Caryophyllene	0.010	<LOQ	<LOQ	
β-Myrcene	0.010	<LOQ	<LOQ	
β-Pinene	0.010	<LOQ	<LOQ	
Camphene	0.010	<LOQ	<LOQ	
Caryophyllene Oxide	0.010	<LOQ	<LOQ	
cis-Nerolidol	0.007	<LOQ	<LOQ	
cis-Ocimene	0.007	<LOQ	<LOQ	
δ-3-Carene	0.010	<LOQ	<LOQ	
δ-Limonene	0.010	<LOQ	<LOQ	
Eucalyptol	0.010	<LOQ	<LOQ	
γ-Terpinene	0.010	<LOQ	<LOQ	
Guaiol	0.010	<LOQ	<LOQ	
Isopulegol	0.010	<LOQ	<LOQ	
Linalool	0.010	<LOQ	<LOQ	
Terpinolene	0.010	<LOQ	<LOQ	
trans-Nerolidol	0.004	<LOQ	<LOQ	
trans-Ocimene	0.004	<LOQ	<LOQ	

## Cannabinoid Relative Concentration

Analyzed by 300.18 UHPLC/PDA



95.104%  
Total THC



<LOQ  
Total CBD

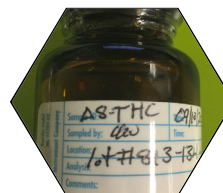


NT  
Moisture: Not Tested

95.216%  
Total Cannabinoids

Compound	LOQ	Mass	Mass	Relative Concentration
	%	%	mg/g	
CBC	0.036	<LOQ	<LOQ	
CBCa	0.036	<LOQ	<LOQ	
CBD	0.036	<LOQ	<LOQ	
CBDa	0.036	<LOQ	<LOQ	
CBDV	0.036	<LOQ	<LOQ	
CBDVa	0.036	<LOQ	<LOQ	
CBG	0.036	<LOQ	<LOQ	
CBGa	0.036	<LOQ	<LOQ	
CBL	0.036	0.112	1.12	
CBN	0.036	<LOQ	<LOQ	
Δ8-THC	0.036	95.104	95.104	
Δ9-THC	0.036	<LOQ	<LOQ	
THCa	0.036	<LOQ	<LOQ	
THCV	0.036	<LOQ	<LOQ	
THCVa	0.036	<LOQ	<LOQ	

Total THC = 0.877 x THC-A + Δ9-THC + Δ8-THC; Total CBD = CBDa \* 0.877 + CBD



*Stacy Gardalen*

Stacy Gardalen  
Quality Control

*Glen Marquez*

Glen Marquez  
Quality Control

**DB Labs**

4439 Polaris Ave  
Las Vegas, NV

(702) 728-5180

www.dblabslv.com

This report is considered highly confidential and the sole property of the customer. DB Labs will not discuss any part of this study with personnel other than those authorized by the client. The results described in this report only apply to the samples analyzed. The reported result is based on a sample weight with the applicable moisture content for that sample. LOQ = Limit of Quantitation. Pesticide LOQ = Instrument Limit of Quantitation. NA = Not Analyzed. ND = Not Detected. NR = Not Reported. NT = Not Tested. PGR = Plant Growth Regulator. Unless otherwise stated all quality control samples performed within specifications established by the Laboratory. This product has been tested by DB Labs, LLC (MME# 61887736101164525768) using valid testing methodologies and a quality system as required by Nevada state law. Edibles are picked up prior to final packaging unless otherwise stated. Values reported relate only to the product tested. The uncertainty of measurement associated with the measurement result reported in this certificate is available from the organization upon request. DB Labs makes no claims as to the efficacy, safety or other risks associated with any detected or non-detected levels of any compounds reported herein. This Certificate shall not be reproduced except in full, without the written approval of DB Labs.



# Certificate of Analysis

Powered by Confident Cannabis

Sample: 2009DBL0181.8787

METRC Sample:

Strain: D8 THC

Ordered: 09/14/2020; Sampled: 09/14/2020; Completed: 09/18/2020

813-134-1

Concentrates & Extracts, Other

## Pesticides

Analyzed by 300.9 LC/MS/MS and GC/MS/MS

Pass

Compound	LOQ	Limit	Mass	Status
	PPB	PPB	PPB	
Abamectin	10	200	<LOQ	Pass
Acequinocyl	10	4000	<LOQ	Pass
Bifenazate	10	400	<LOQ	Pass
Bifenthrin	10	100	<LOQ	Pass
Cyfluthrin	10	2000	<LOQ	Pass
Cypermethrin	10	1000	<LOQ	Pass
Daminozide	10	800	<LOQ	Pass
Dimethomorph	10	2000	<LOQ	Pass
Etoazole	10	400	<LOQ	Pass
Fenhexamid	10	1000	<LOQ	Pass
Flonicamid	10	1000	<LOQ	Pass
Fludioxonil	10	500	<LOQ	Pass
Imidacloprid	10	500	<LOQ	Pass
Myclobutanil	10	400	<LOQ	Pass
Paclobutrazol	10	400	<LOQ	Pass
Piperonyl Butoxide	10	3000	<LOQ	Pass
Pyrethrins	10	2000	<LOQ	Pass
Quintozene	10	800	<LOQ	Pass
Spinetoram	10	1000	<LOQ	Pass
Spinosad	10	1000	<LOQ	Pass
Spirotetramat	10	1000	<LOQ	Pass
Thiamethoxam	10	400	<LOQ	Pass
Trifloxystrobin	10	1000	<LOQ	Pass
Plant Growth Regulators	10	50	<LOQ	Pass

## Microbials

Analyzed by 300.1 Plating/QPCR

Pass

Quantitative Analysis	LOQ	Limit	Mass	Status
	CFU/g	CFU/g	CFU/g	
Bile-Tolerant Gram-Negative Bacteria	9	100	<LOQ	Pass
Yeast & Mold	90	1000	<LOQ	Pass
Qualitative Analysis	Detected or Not Detected		Status	
E. Coli	Not Detected		Pass	
Salmonella	Not Detected		Pass	

## Mycotoxins

Analyzed by 300.2 Elisa

Pass

Mycotoxin	LOQ	Limit	Mass	Status
	PPB	PPB	PPB	
Aflatoxins	4.0	20.0	<LOQ	Pass
Ochratoxin A	2.0	20.0	5.8	Pass

## Heavy Metals

Analyzed by 300.8 ICP/MS

Pass

Element	LOQ	Limit	Mass	Status
	PPB	PPB	PPB	
Arsenic	51	2000	<LOQ	Pass
Cadmium	51	820	<LOQ	Pass
Lead	51	1200	<LOQ	Pass
Mercury	51	400	<LOQ	Pass

## Residual Solvents

Analyzed by 300.13 GC/FID and GC/MS

Complete

Compound	LOQ	Limit	Mass	Status
	PPM	PPM	PPM	
Butanes	65	<LOQ	Tested	
Ethanol	65	<LOQ	Tested	
Heptanes	65	390	Tested	
Propane	65	<LOQ	Tested	



*Stacy Gardalen*

Stacy Gardalen  
Quality Control

*Glen Marquez*

Glen Marquez  
Quality Control



4439 Polaris Ave  
Las Vegas, NV  
(702) 728-5180  
www.dblabslv.com

This report is considered highly confidential and the sole property of the customer. DB Labs will not discuss any part of this study with personnel other than those authorized by the client. The results described in this report only apply to the samples analyzed. The reported result is based on a sample weight with the applicable moisture content for that sample. LOQ = Limit of Quantitation. Pesticide LOQ = Instrument Limit of Quantitation. NA = Not Analyzed. ND = Not Detected. NR = Not Reported. NT = Not Tested. PGR = Plant Growth Regulator. Unless otherwise stated all quality control samples performed within specifications established by the Laboratory. This product has been tested by DB Labs, LLC (MME# 61887736101164525768) using valid testing methodologies and a quality system as required by Nevada state law. Edibles are picked up prior to final packaging unless otherwise stated. Values reported relate only to the product tested. The uncertainty of measurement associated with the measurement result reported in this certificate is available from the organization upon request. DB Labs makes no claims as to the efficacy, safety or other risks associated with any detected or non-detected levels of any compounds reported herein. This Certificate shall not be reproduced except in full, without the written approval of DB Labs.